

# New Wellness Center for Elizabethtown College

Kelly Bresnowitz  
Jamey Hogarth  
Rachel Lacek



# Problem Statement

---

- Elizabethtown College has been growing since it opened in 1899.
- Enrollment increases faster than facility construction
- Wellness resources are running low
  - Locker Rooms



# Objective

---

- Design a Wellness Center that follows LEED guidelines.

# What is LEED?

- LEED = Leadership in Energy & Environmental Design
- Green building certification program
- Certain amount of points must be earned
  - Different levels of certifications





# Location



# Location

---

- Between turf field and soccer game field
- Near center of campus
- Should attract students from various locations
- Already cleared land
  - Reduce costs

# Additional Parking



# Parking Garage

---

- ◉ Convenient parking
- ◉ Smaller footprint than a large parking lot
- ◉ Lower Floors for faculty
- ◉ Higher floors for residents





# Wellness Center Basement

---

- 8 locker rooms
  - 3 mens/womens
  - 2 official/coach

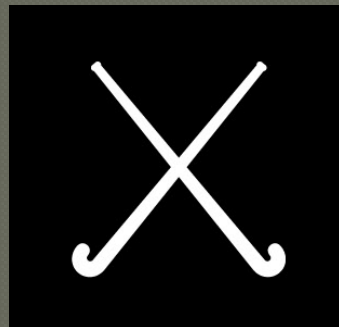


# Locker Room Usage - Fall

## NEW LOCKER ROOMS

---

- Women's Soccer
- Men's Soccer
- Field Hockey



## THOMPSON

---

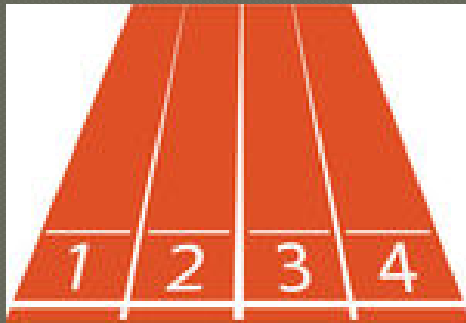
- Women's Cross Country
- Men's Cross Country
- Women's Volleyball



# Locker Room Use - Winter

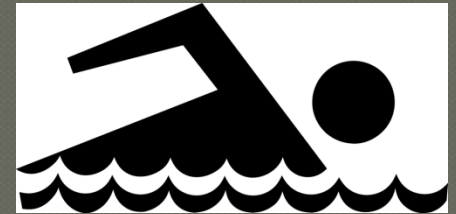
## NEW LOCKER ROOMS

- Women's Indoor Track
- Men's Indoor Track



## THOMPSON

- Women's Basketball
- Men's Basketball
- Women's Swimming
- Men's Swimming
- Wrestling



# Locker Room Use - Spring

## NEW LOCKER ROOMS

- Women's Lacross
- Men's Lacross
- Baseball
- Softball



## THOMPSON

- Women's Tennis
- Men's Tennis



# Basement

---

## ◉ Storage Room

- Athletic Equipment
- Can never have too much storage





# Basement

---

## ● Turf Room

- Used for off season sports
  - Soccer, baseball, softball, lacross, field hockey
- Better than a hardwood floor
  - Less damage to Thompson's wood floor
- Indoor field intramurals



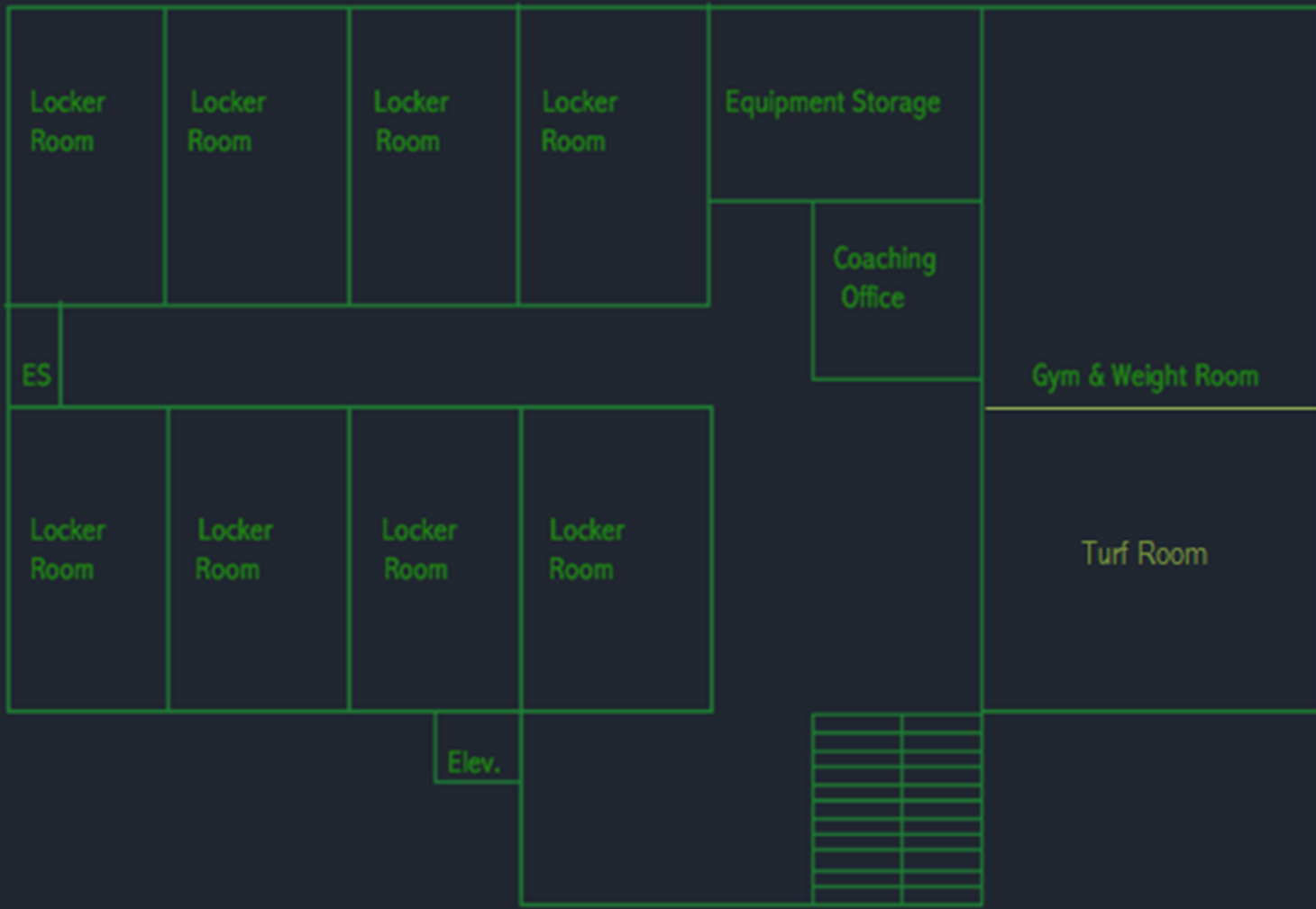
# Basement

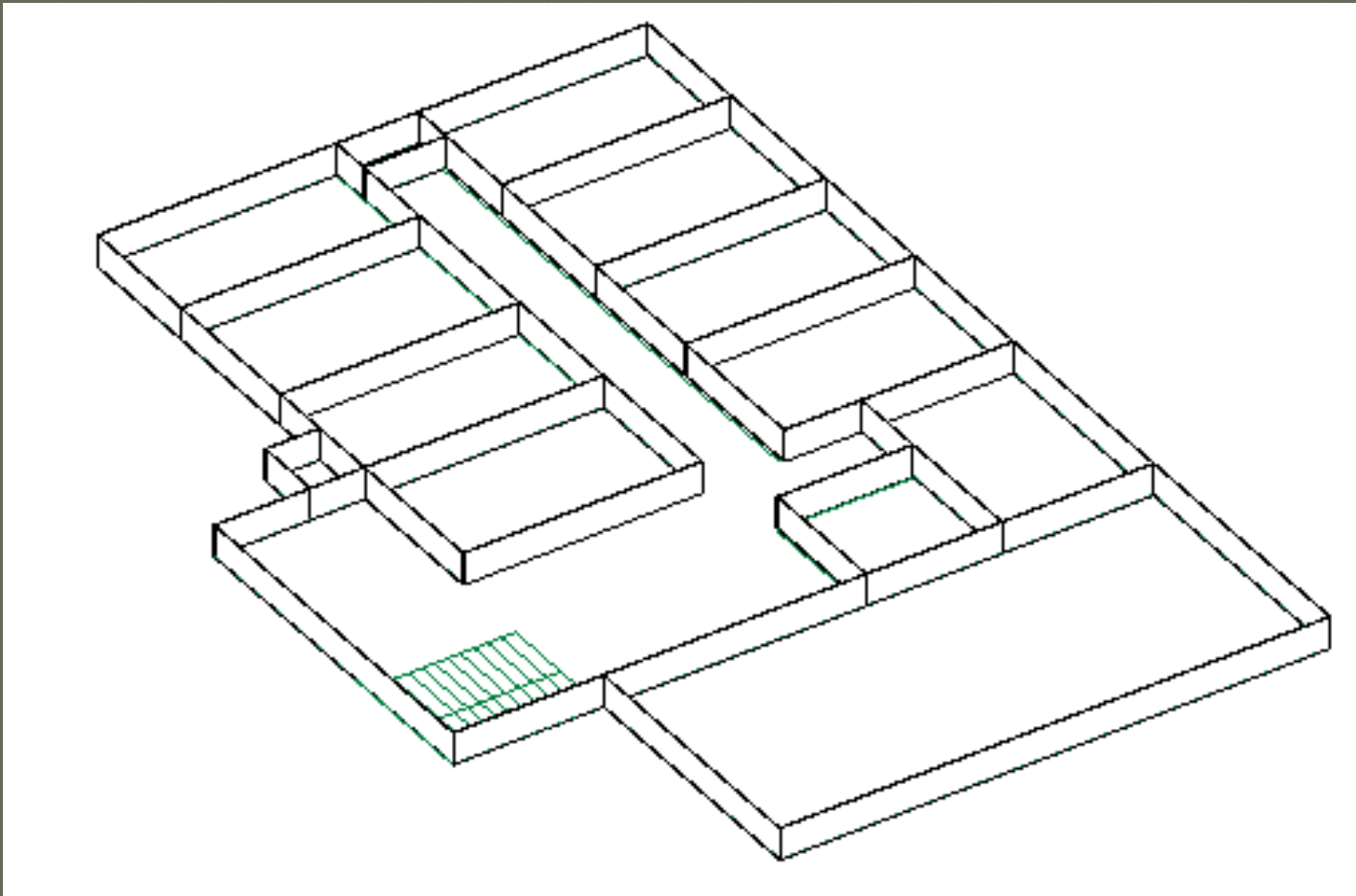
---

## ● Gym & Weight Room

- Body Shop and Athletic Weight Room are very small
- Reduce Crowdedness
- More machines and free weights







# Ground Floor

## ● Patio

- Outdoor seating
  - School Work
  - Eating
  - Socializing



## ● Elevator/Stairs

## ● Atrium

## ● Additional Seating





# Ground Floor

## ● Second Cafeteria

- Uses meal swipes, not Jay Bucks
- Eat in or Take out
- Reduce Marketplace Crowdedness during peak times



# Ground Floor

## ● Counseling Services

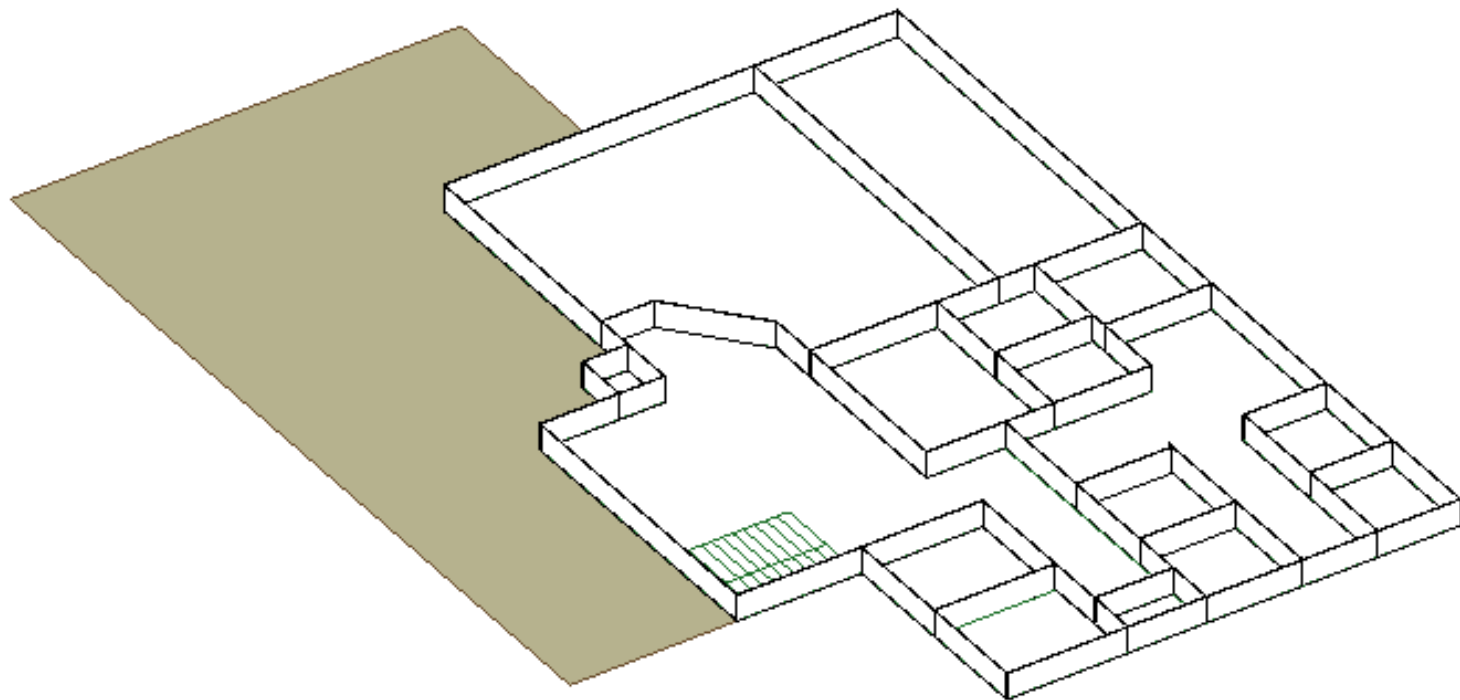
- Move out of BSC
- Located in back so students are not embarrassed to go

## ● Nurse's Office

- Now located on Campus







# Second Floor

---

## ● Regulation Size Indoor Track

- Competitions can be held
- Off season training
- Possibility of fun school track competition
  - Intramurals
- Bleachers for spectators
- Indoor running option for non-athletes
  - Not a treadmill





# Second Floor

## ● Basketball Courts

- Not wood
- Main use for intramural teams
- Large area for off season team training
- Curtain partitions to separate track and courts



# Second Floor

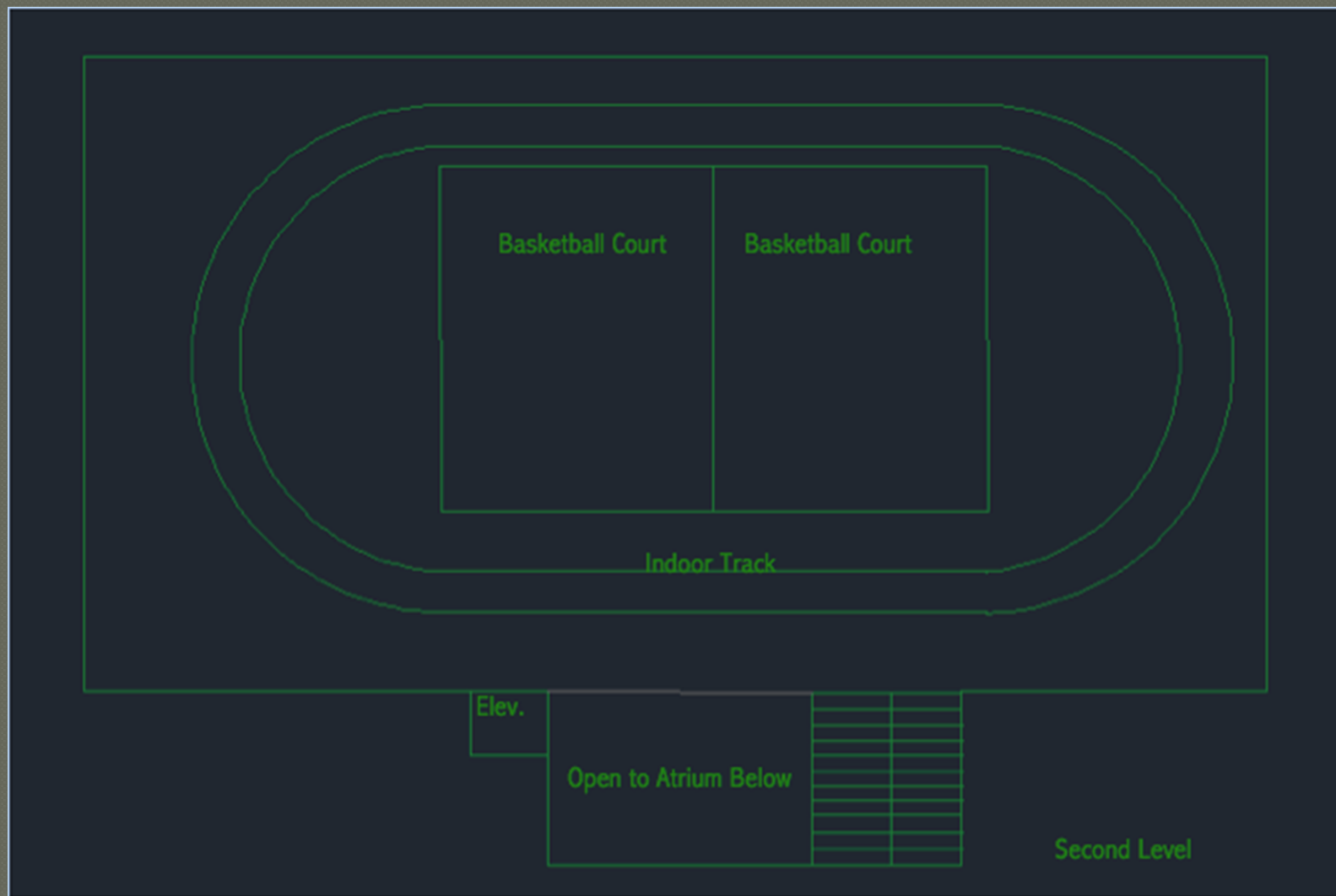
## ● Rock Wall

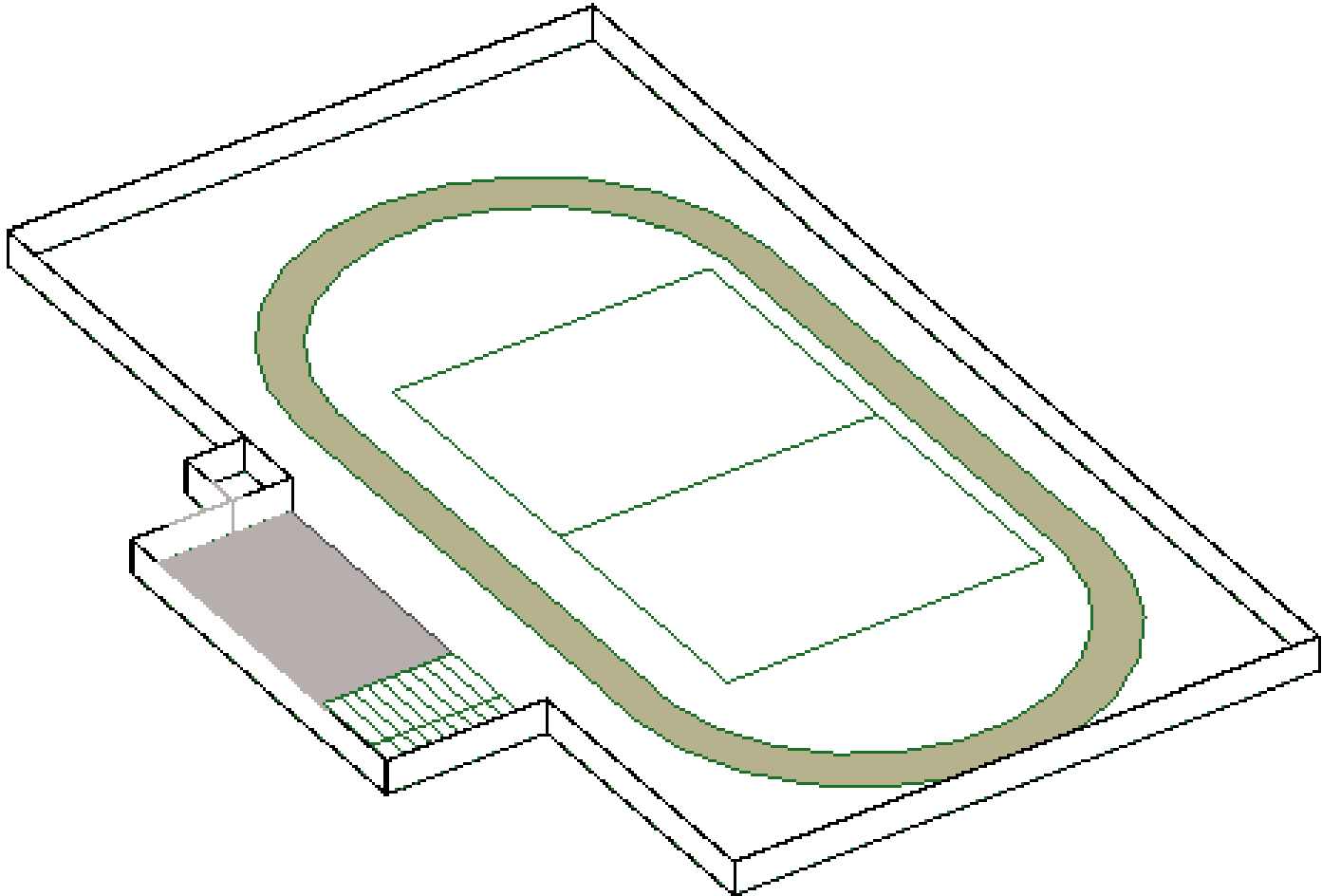
- Adventure Club/Climbing Club

## ● High Ropes Course

- Suspended above track
- Sports Team Bonding
- Outside Groups







# Additional Work

---

- ◉ Redo Roof in Thompson
  - Leaking
- ◉ Redo Track Surface
- ◉ Redo Older Locker Rooms
- ◉ Repaint Racquet Ball Rooms





# LEED Certification

---

- ◉ Gray Water Utilization
- ◉ Bike Racks Outside
- ◉ Reduced Parking Footprint (Parking Garage)
- ◉ Water Metering
- ◉ Indoor Water Use Reduction
- ◉ Outdoor Water Use Reduction
- ◉ Refrigerant Management
- ◉ Renewable Energy Production

# LEED Certification

---

- ◉ Storage and Collection of Recyclables
- ◉ Waste Management
- ◉ Green Vehicle Preferred Parking (in Parking Garage)
- ◉ Sunlight Utilization
- ◉ Tobacco Smoke Control
- ◉ Acoustic Performance
- ◉ Innovation

# Questions?

---

